
ENJOY A BREAK



Lake Maroon Holiday Park

Located approximately one hour's drive from Brisbane or the Gold Coast, the Lake Maroon Holiday Park is a unique family fun destination.



WHERE WE ARE

Located in the heart of the great South East Queensland Scenic Rim, this is a beautiful 220-acre lifestyle property. The property is a one to two hour's drive from Brisbane or the Gold Coast, and descends from mountains to the best water skiing and fishing lake in Queensland: providing guests with a variety of bush scenery, wild-life, magnificent views, and a wide range of water based activities.



LAKE MAROON HOLIDAY PARK

535 Burnett Creek Road, Maroon, 4310

07 54636256

www.maroodam.com



TIME TO RELAX



Maroon Dam is stocked with:

- Australian Bass
- Golden Perch (yellowbelly)
- Silver Perch
- Mary River Cod

Fly Fishing / Lure Fishing / Bait Fishing

Maroon Dam is one of South East Queensland's best freshwater fly and surface fishing destinations, with the best times being early morning and late afternoon. During the middle of the day, deeper diving lures, soft plastics and lipless crank baits are effective, so too is live bait such as shrimp, freshwater yabbies and worms. Focus areas are the structured regions of the dam, such as the dead timber in the water and rocky point areas.

LAKE MAROON HOLIDAY PARK

535 Burnett Creek Road, Maroon, 4310

07 54636256

www.maroodam.com



Lake Maroon is rated as one of Queensland's best-stocked Bass fishing impoundments.

We have our own private access to the lake. This private area is exclusively for Lake Maroon Holiday Park guests, and is free to Lake Maroon Holiday Park guests. Guests can tie-up or anchor their boat or yacht overnight at the water's edge in a secure environment. Likewise, jet skis can be left safely at the waters edge overnight. At night our lakeside area is locked off.

Guests can set up a day shelter right beside the waters edge, or enjoy our picnic areas where tables and seating is available.

It is usually best to launch larger boats from the public concrete ramp on the far side of the lake, and then sail across the lake to our lakeside beach area. Tinneys and jet skis can easily be launched from our lakeside area.

SOMETHING FOR EVERYONE

Our very large camp sites, cabin, donga and our huge Queenslander homestead cater for campers and caravanners, and for social groups and families and business groups. We offer magic scenic vistas comprising mountains, lake and bushland. Wildlife abounds.



CAMPING:

Our camping facilities include an amenities block with hot showers, a camp kitchen with dish washing facilities. Our camping sites are much larger than normal city sites. Family groups and friends are able to camp alongside each other and to position tents and caravans in a manner that pleases them best. We have four camping areas: the Billabong area, the Maroon Cove, the Hidden Ridge, and our mountain bush camps.



All the family: don't leave your pet at home.



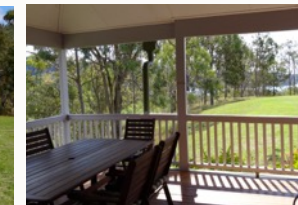
All camp sites have plenty of space: mates can join you.

GRANDVIEW HOLIDAY HOMESTEAD:

Own & enjoy a beautiful and unique family Queenslander homestead for 2 days, 3, 4 or more . . . bring your friends, mates and family . . . spoil yourself and your mates . . . and experience the atmosphere: enjoy the vista of mountains, lake and bushland; or sip wine and from your verandah watch a waterskier crossing the lake in the distance; or take pleasure in picnicking in the homestead grounds.



An ideal venue for social or family groups & gatherings.



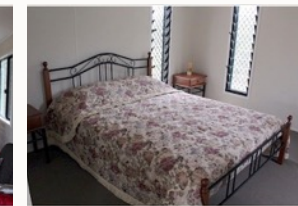
Grandview homestead has 2 toilets and 2 shower rooms.

LAKEVIEW CABIN:

Our air conditioned Lakeview cabin has one queen size bed, and can comfortably accommodate two guests. Arrangements can be made for accommodation for a maximum of four guests. For detail regarding additional guests telephone 07 5463 6256.



Lakeview has microwave, fridge, glasses, etc.



TV in both bedroom and lounge room.

GO TO WEB SITE FOR DETAIL & TO MAKE A BOOKING
WWW.MAROONDAM.COM